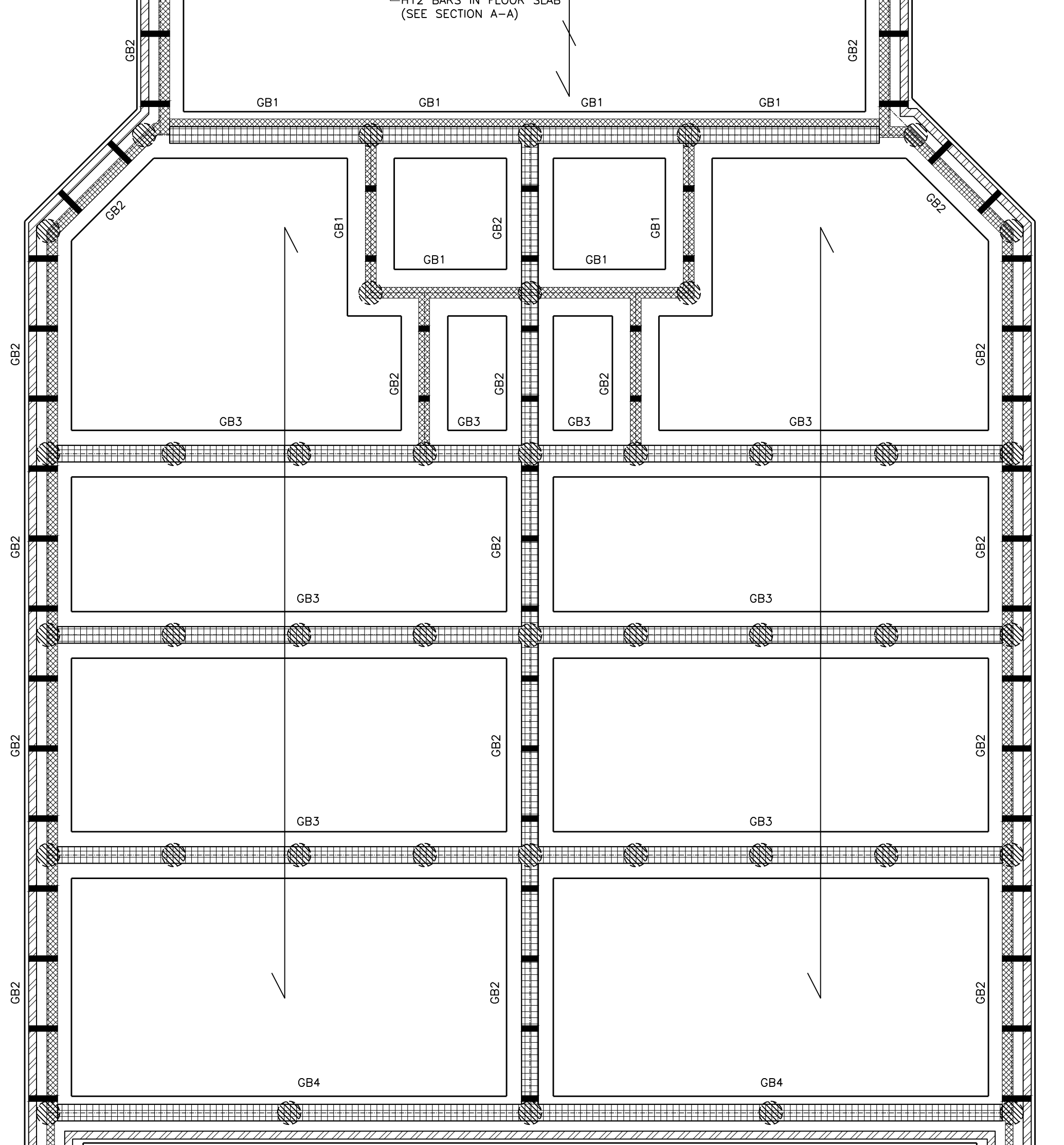
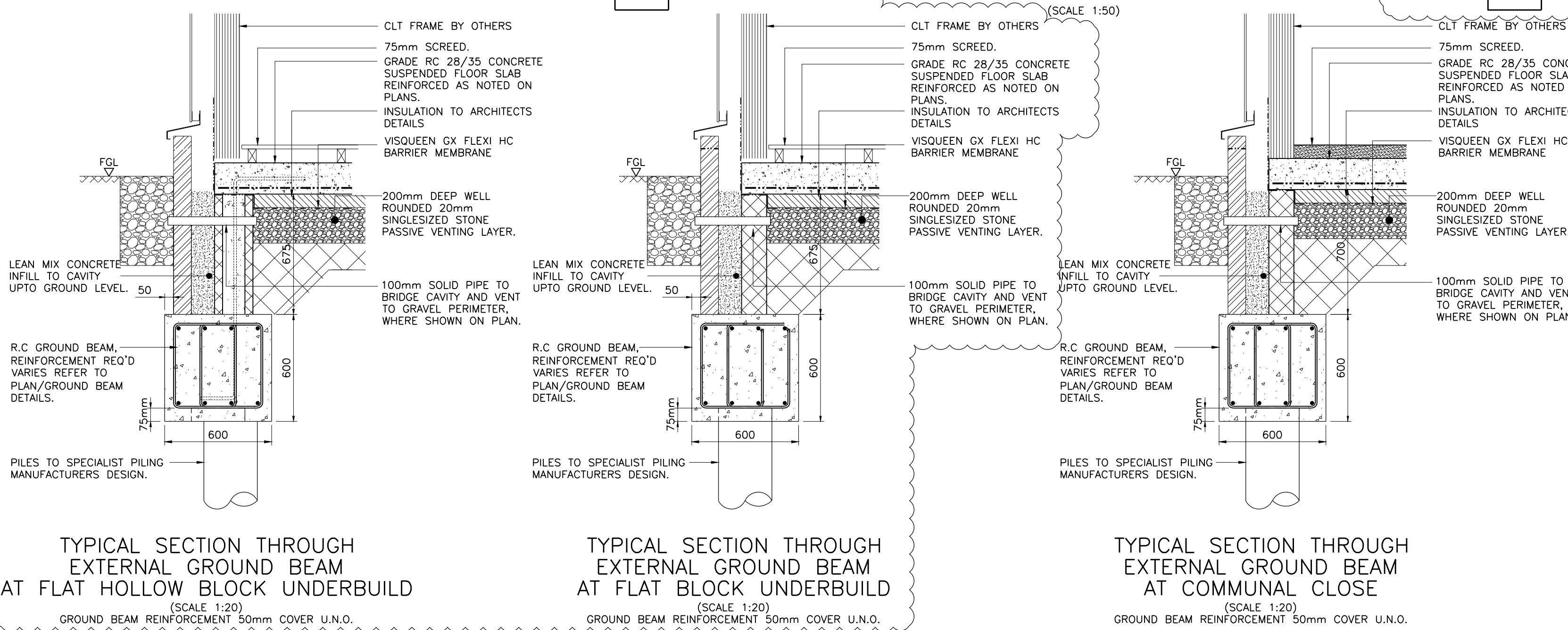


- LEGEND:**
- Denotes span of 175mm THK. GRADE C28/35 CONCRETE SUSPENDED SLAB REINFORCED WITH 1 LAYER B785 MESH TO BOTTOM FACE (25mm COVER). ADDITIONAL LAYER OF B785 MESH TO TOP FACE AS INDICATED ON PLANS (30mm COVER).
 - Denotes span of 175mm THK. GRADE C28/35 CONCRETE SUSPENDED SLAB REINFORCED WITH 1 LAYER A393 MESH TO TOP & BOTTOM FACES (25mm COVER).
 - Denotes 140 7N/mm BLOCK UNDERBUILDING WALL. GRADE M5 MORTAR.
 - Denotes 215mm 7N/mm HOLLOWBLOCK GRADE M5 MORTAR. M12 TIE-BARS @900mm CENTRES WITH RC28/35 INFILL.
 - INDICATES LOCATION OF PILE FOUNDATIONS TO CONTRACTOR'S DESIGN. (MAX 600mm UNFACTORED PILE LOAD).
 - INDICATES LOCATION OF GAS VENTING (PIPE TO EXTERNAL WALLS VOID TO INTERNAL WALLS. REFER TO DETAILS FOR FURTHER INFORMATION).
 - ALL GROUND BEAMS 600W x 600dp U.N.O.
 - REFER TO DRAWING Nos. J3245D-900 FOR PERFORMANCE SPECIFICATION & DETAILED CONSTRUCTION NOTES.



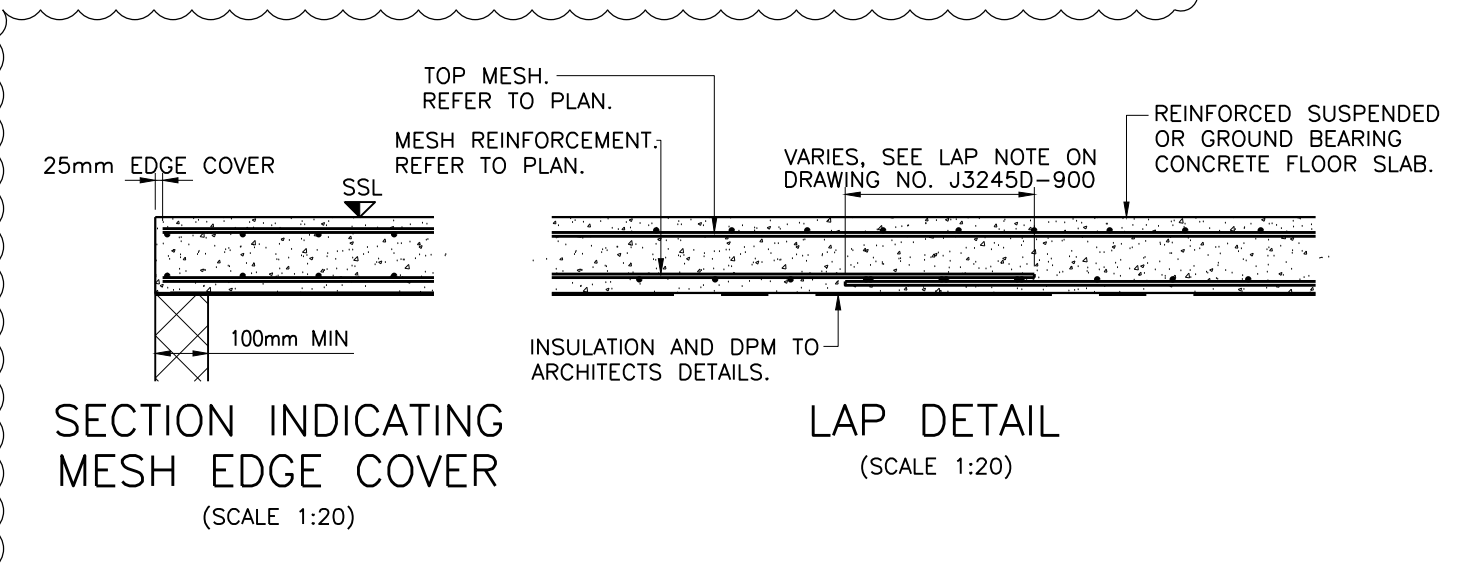
FOUNDATION LAYOUT SHOWING STRUCTURE OVER (SCALE 1:50)



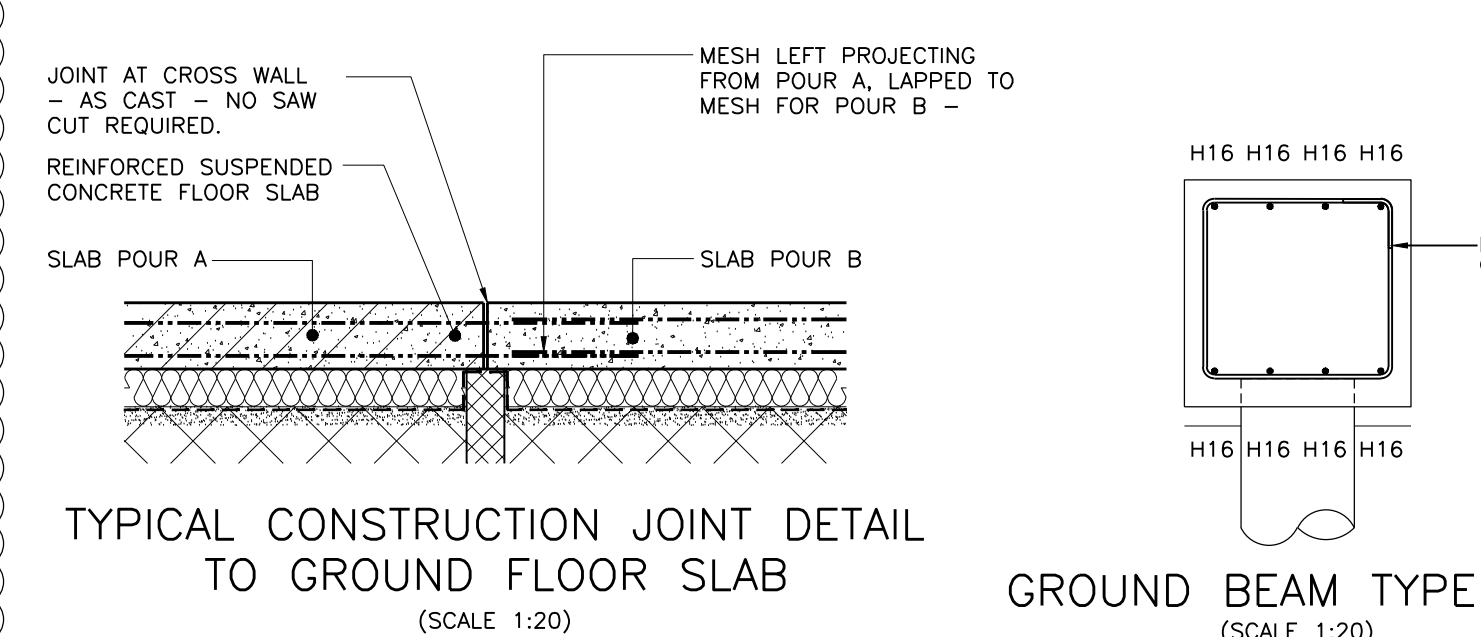
TYPICAL SECTION THROUGH EXTERNAL GROUND BEAM AT FLAT BLOCK UNDERBUILD (SCALE 1:20)

TYPICAL SECTION THROUGH EXTERNAL GROUND BEAM AT COMMUNAL CLOSE (SCALE 1:20)

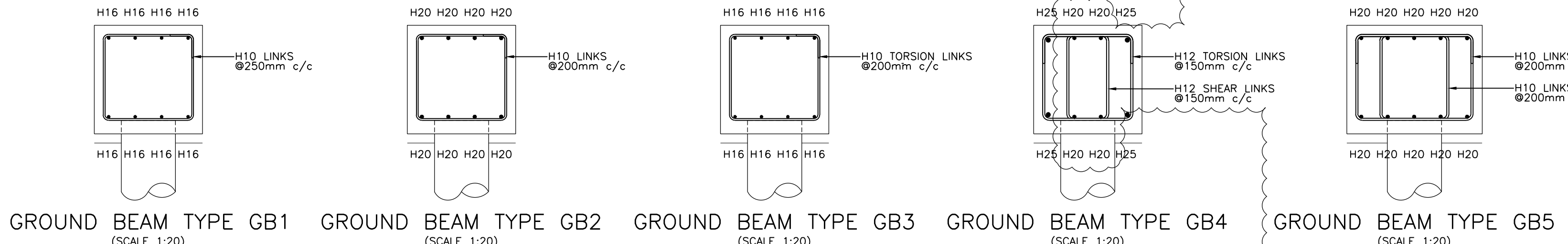
TYPICAL SECTION THROUGH INTERNAL GROUND BEAM HOLLOW BLOCK UNDERBUILD (SCALE 1:20)



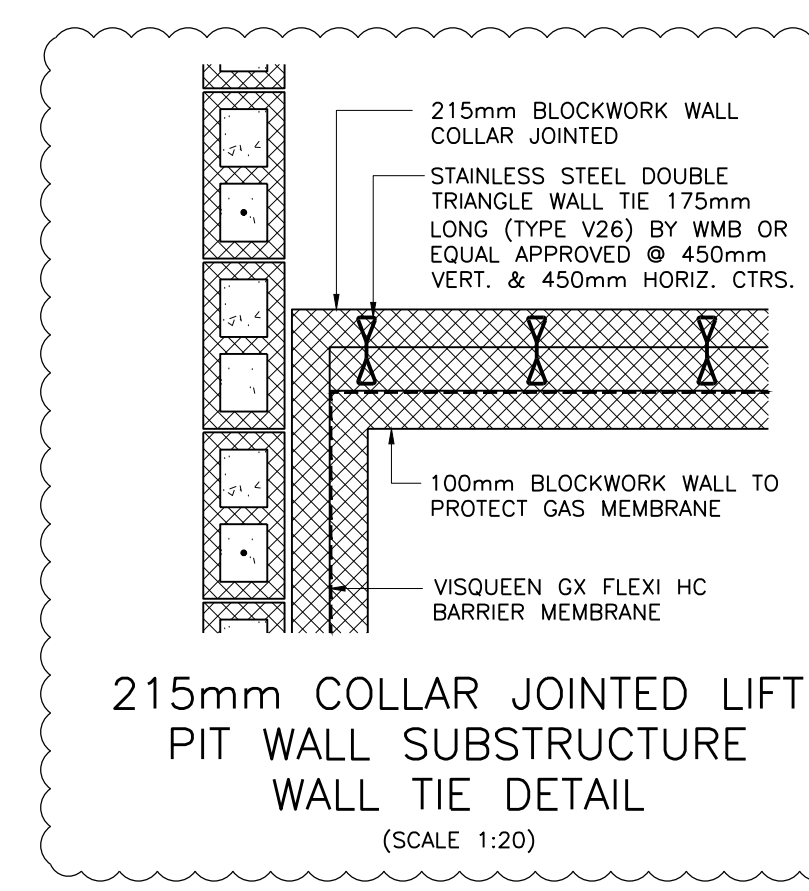
SECTION INDICATING MESH EDGE COVER (SCALE 1:20)



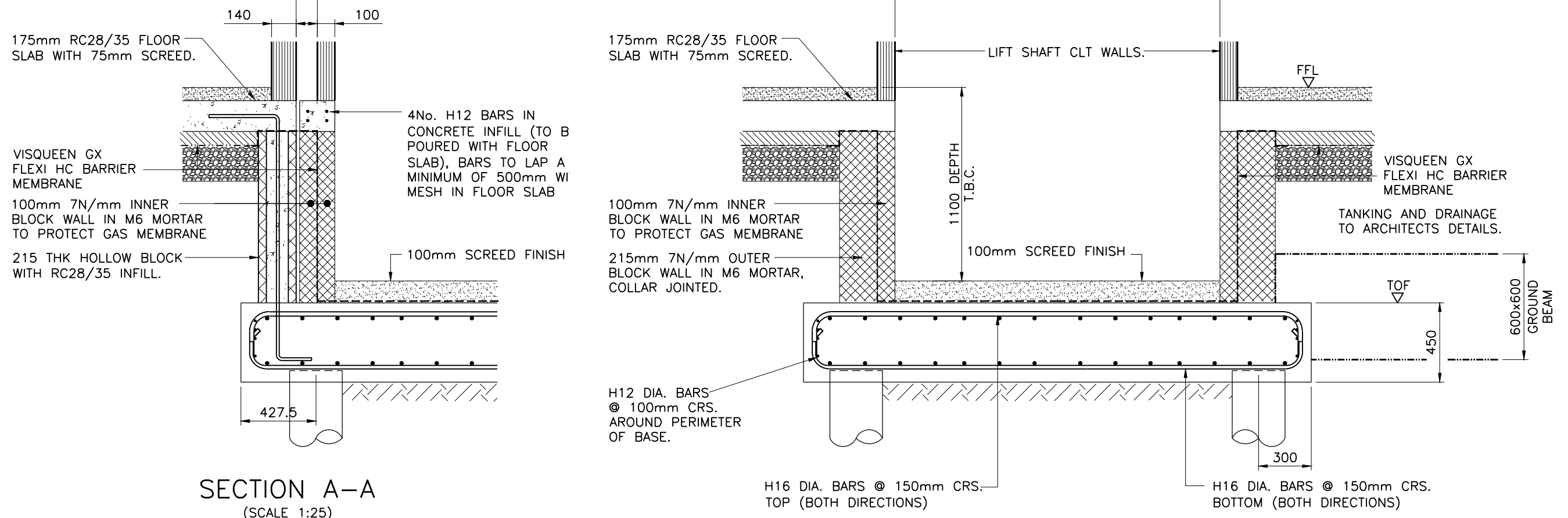
TYPICAL CONSTRUCTION JOINT DETAIL TO GROUND FLOOR SLAB (SCALE 1:20)



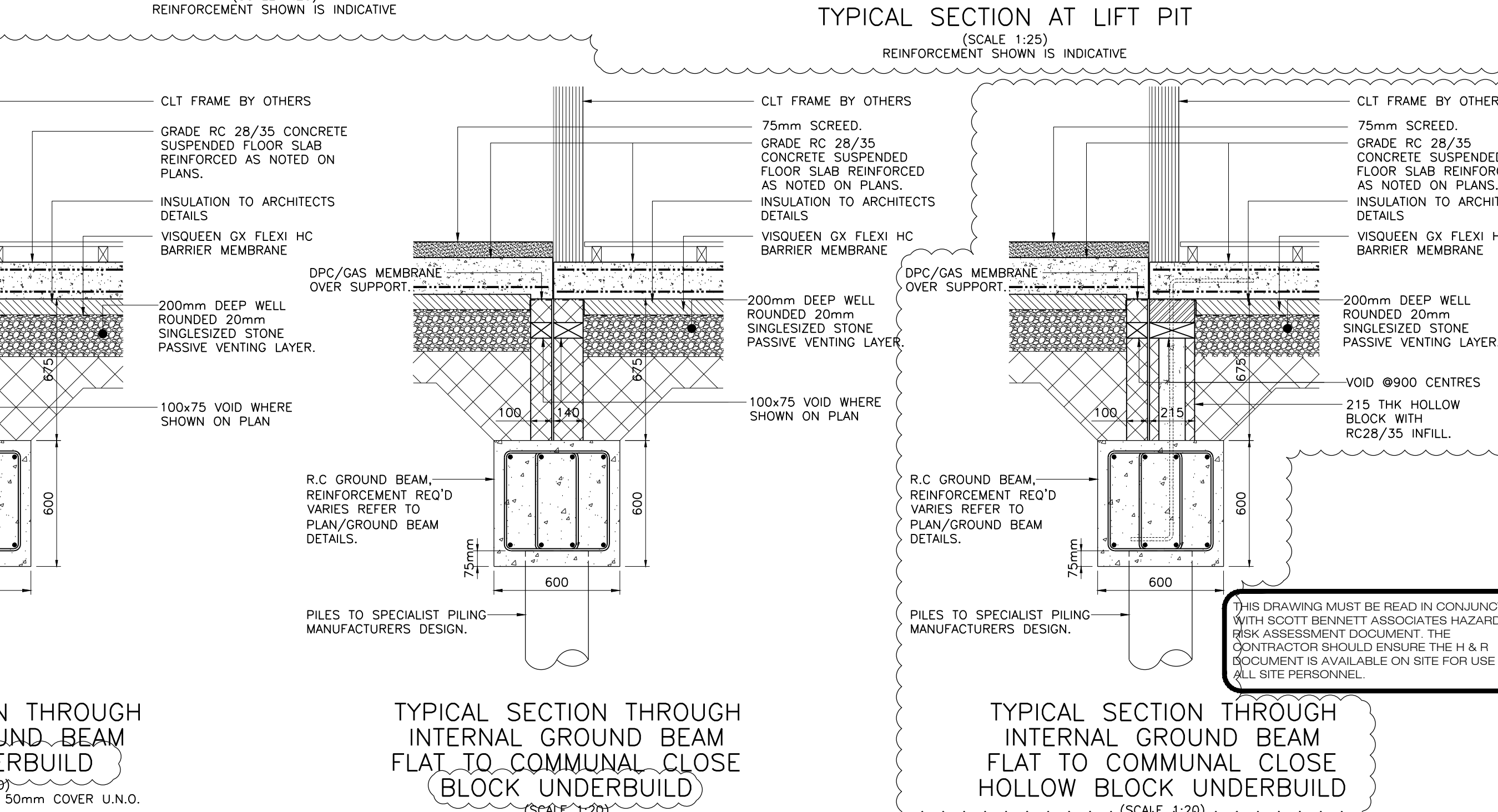
GROUND BEAM TYPE GB1 GROUND BEAM TYPE GB2 GROUND BEAM TYPE GB3 GROUND BEAM TYPE GB4 GROUND BEAM TYPE GB5 (SCALE 1:20)



215mm COLLAR JOINTED LIFT PIT WALL SUBSTRUCTURE WALL TIE DETAIL (SCALE 1:20)



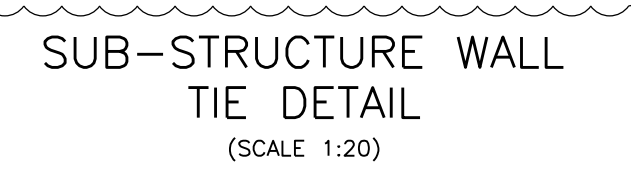
TYPICAL SECTION AT LIFT PIT (SCALE 1:25)



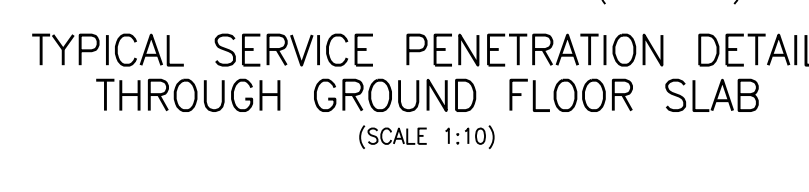
TYPICAL SECTION THROUGH INTERNAL GROUND BEAM HOLLOW BLOCK UNDERBUILD (SCALE 1:20)

TYPICAL SECTION THROUGH INTERNAL GROUND BEAM FLAT TO COMMUNAL CLOSE BLOCK UNDERBUILD (SCALE 1:20)

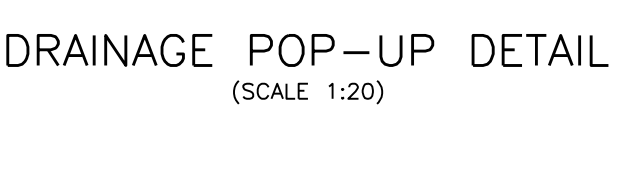
TYPICAL SECTION THROUGH INTERNAL GROUND BEAM HOLLOW BLOCK UNDERBUILD (SCALE 1:20)



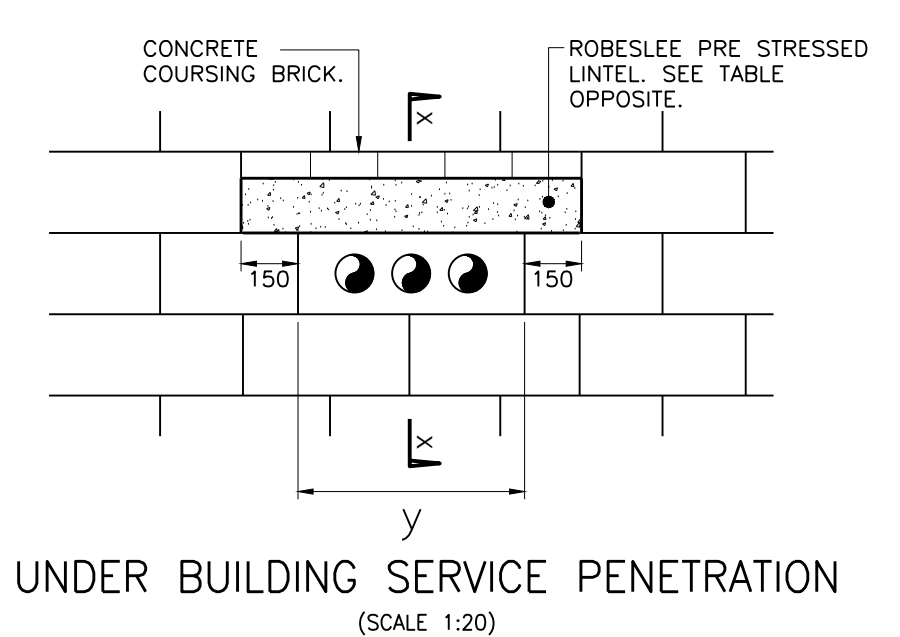
SUB-STRUCTURE WALL TIE DETAIL (SCALE 1:20)



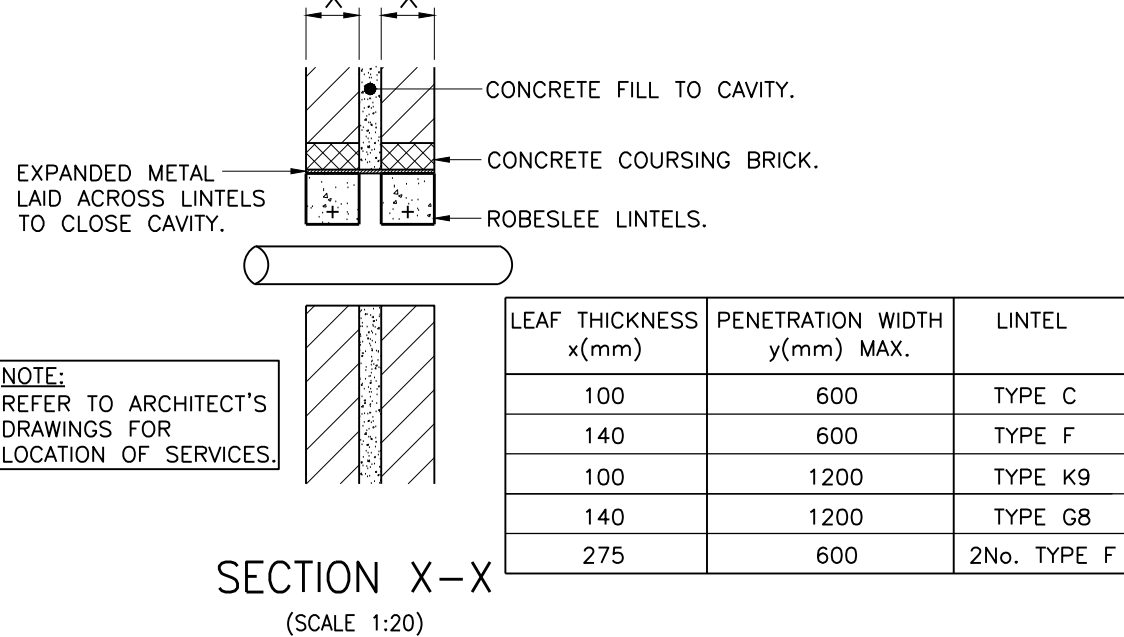
TYPICAL SERVICE PENETRATION DETAIL THROUGH GROUND FLOOR SLAB (SCALE 1:10)



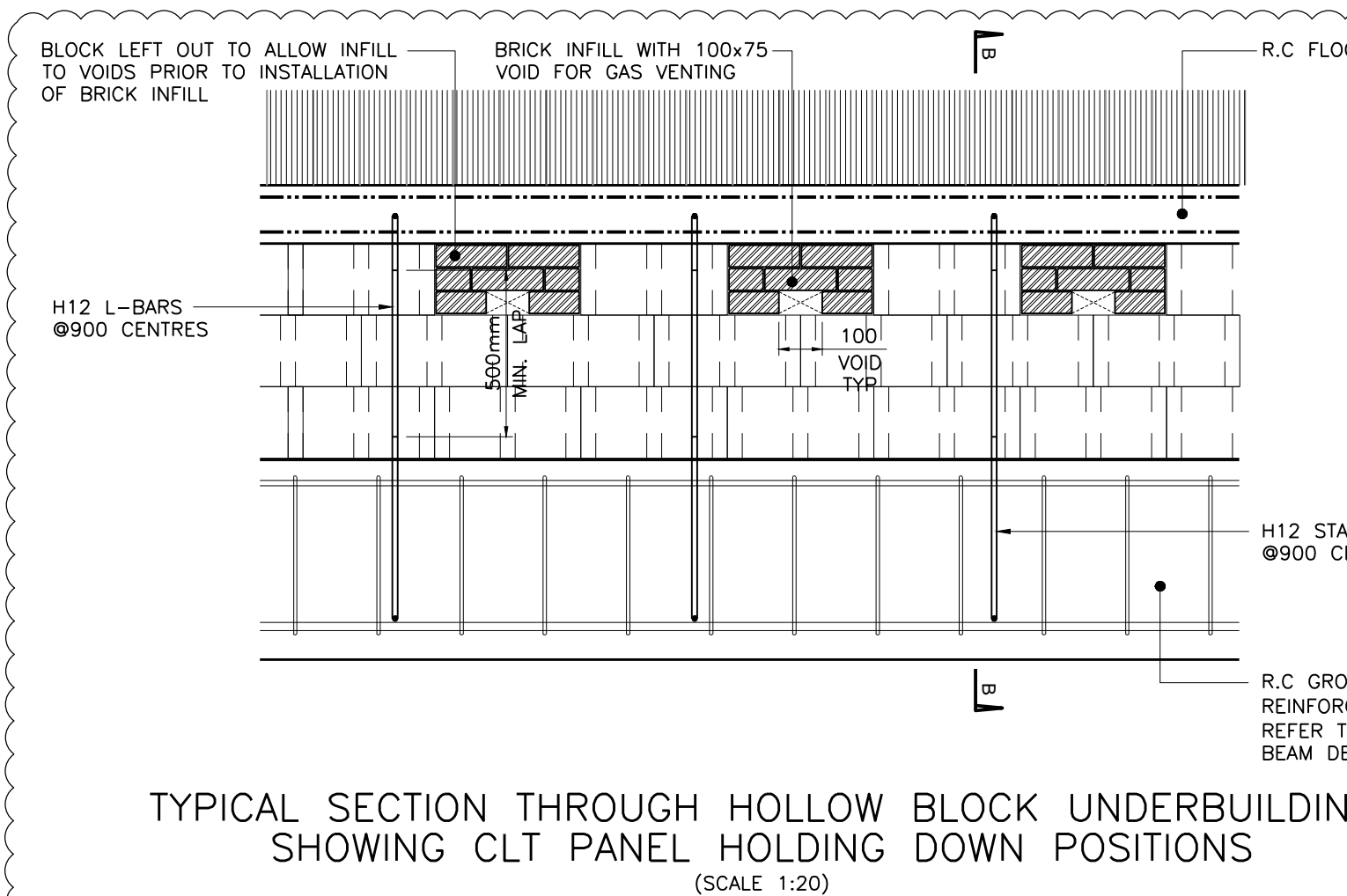
DRAINAGE POP-UP DETAIL (SCALE 1:20)



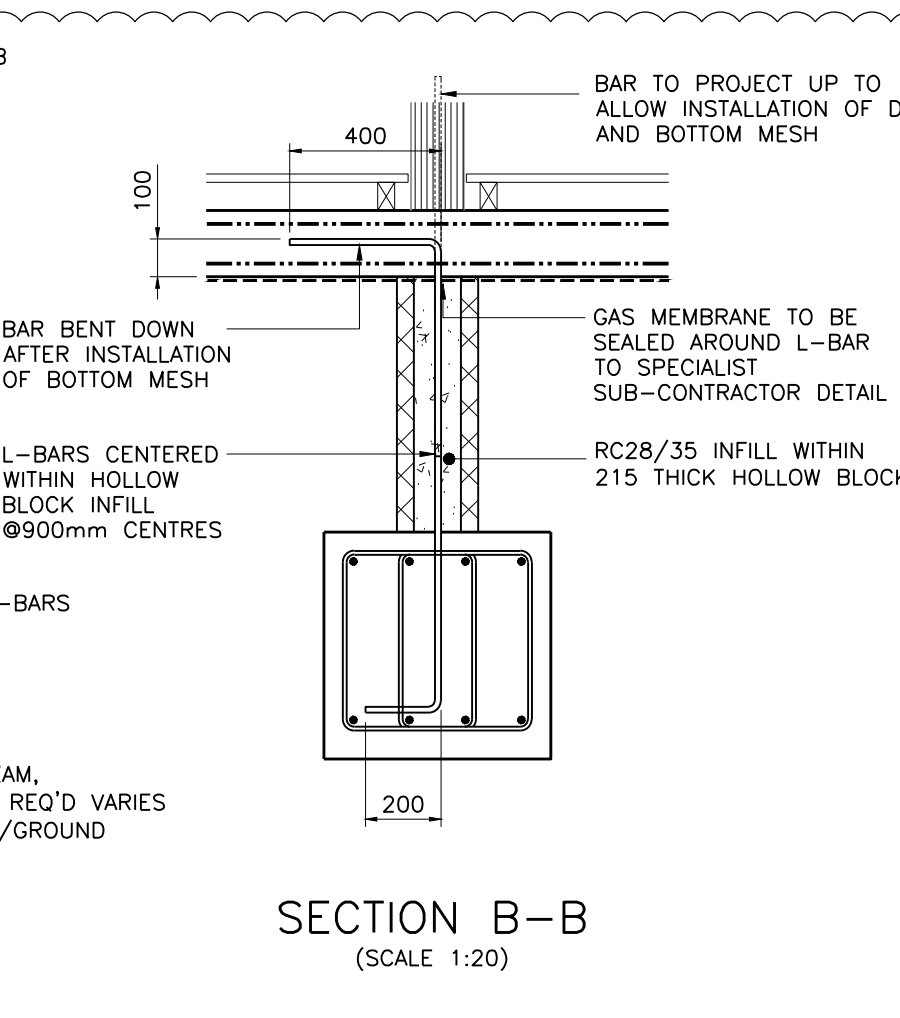
UNDER BUILDING SERVICE PENETRATION (SCALE 1:20)



SECTION X-X (SCALE 1:20)



TYPICAL SECTION THROUGH HOLLOW BLOCK UNDERBUILD SHOWING CLT PANEL HOLDING DOWN POSITIONS (SCALE 1:20)



SECTION B-B (SCALE 1:20)

- NOTES**
- THIS DRAWING IS COPYRIGHT, RESERVED AND REMAINS THE PROPERTY OF SCOTT BENNETT ASSOCIATES.
 - THE CONTRACTOR AND HIS SUBCONTRACTORS/ SUPPLIERS ARE TO VERIFY ALL DIMENSIONS AND LEVELS ON SITE BEFORE MAKING SHOP DRAWINGS OR COMMENCING MANUFACTURE.
 - DO NOT SCALE THIS DRAWING. ONLY USE FIGURED DIMENSIONS. THE CONTRACTOR IS TO BRING TO THE NOTICE OF THE ENGINEER ANY DISCREPANCIES CONTAINED IN THIS DRAWING PRIOR TO WORK COMMENCING. WHERE REQUIRED THIS DRAWING TO BE READ IN CONJUNCTION WITH ALL RELEVANT DESIGN DRAWINGS & SPECIFICATIONS.
 - ALL WORK TO CONFORM TO THE RELEVANT BRITISH STANDARDS.
 - THIS DRAWING MUST BE READ IN CONJUNCTION WITH SCOTT BENNETT ASSOCIATES' HAZARD & RISK ASSESSMENT DOCUMENT. THE CONTRACTOR SHOULD ENSURE THE H & R DOCUMENT IS AVAILABLE ON SITE FOR USE BY ALL SITE PERSONNEL.

REV	DESCRIPTION	BY	CHKD	DATE
B	LAYOUT/DETAILS UPDATED/ADDED TO SUIT CHANGE IN HOLDING DOWN DETAIL. FLOOR SLAB INCREASED TO 175mm THICK. TO FLATS. LIFT PIT DETAIL REVISED.	KK	KG	29.01.16
A	GAS BARRIER/VENTING ADDED TO LIFT PIT TO SITE INVESTIGATION REPORT.	KK	KG	09.11.15

I SOLEMLY AND SINCERELY CERTIFY THAT THIS IS A TRUE AND FAIR COPY OF THE PLANDRAWING REFERRED TO IN THE APPLICATION.
 Date: _____ Signed: _____

client
 CCG (Scotland) Ltd

project
 Yoker Ferry Road, Glasgow

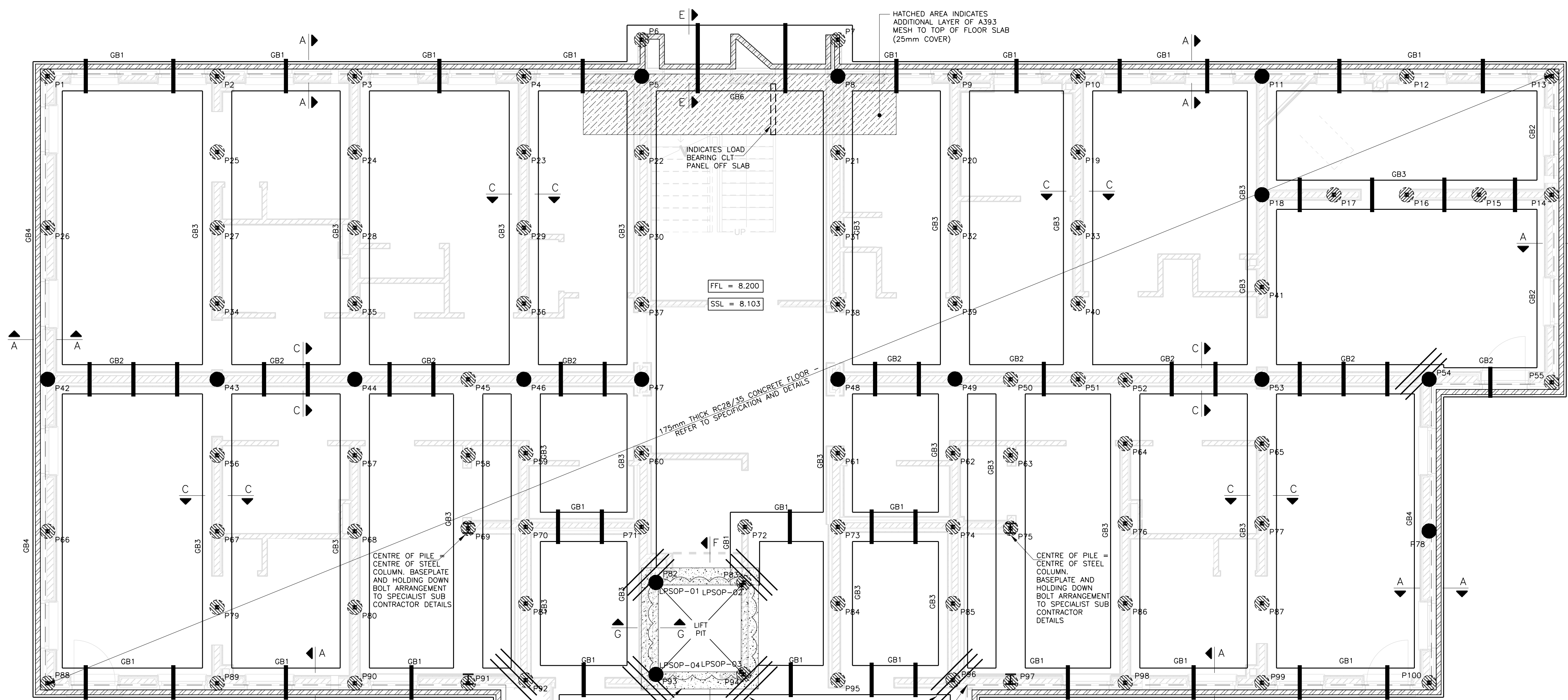
title
 Foundation Layout & Substructure Details

Scott Bennett Associates
 consulting civil and structural engineers

Scott Bennett Associates (Group 1) Ltd.
 19 South Gyle Drive, Gairloch Gardens, Dunfermline, KY11 8PD
 T: 01383 627537, F: 01383 627538, E: enquiries@sbassocotland.com

ISSUE STATUS
 Billing

drawn	checked	date
KK	KG	10/09/15
scales	1:50	sheet size A0
Drawing Number	J3245D-100	Revision
		B

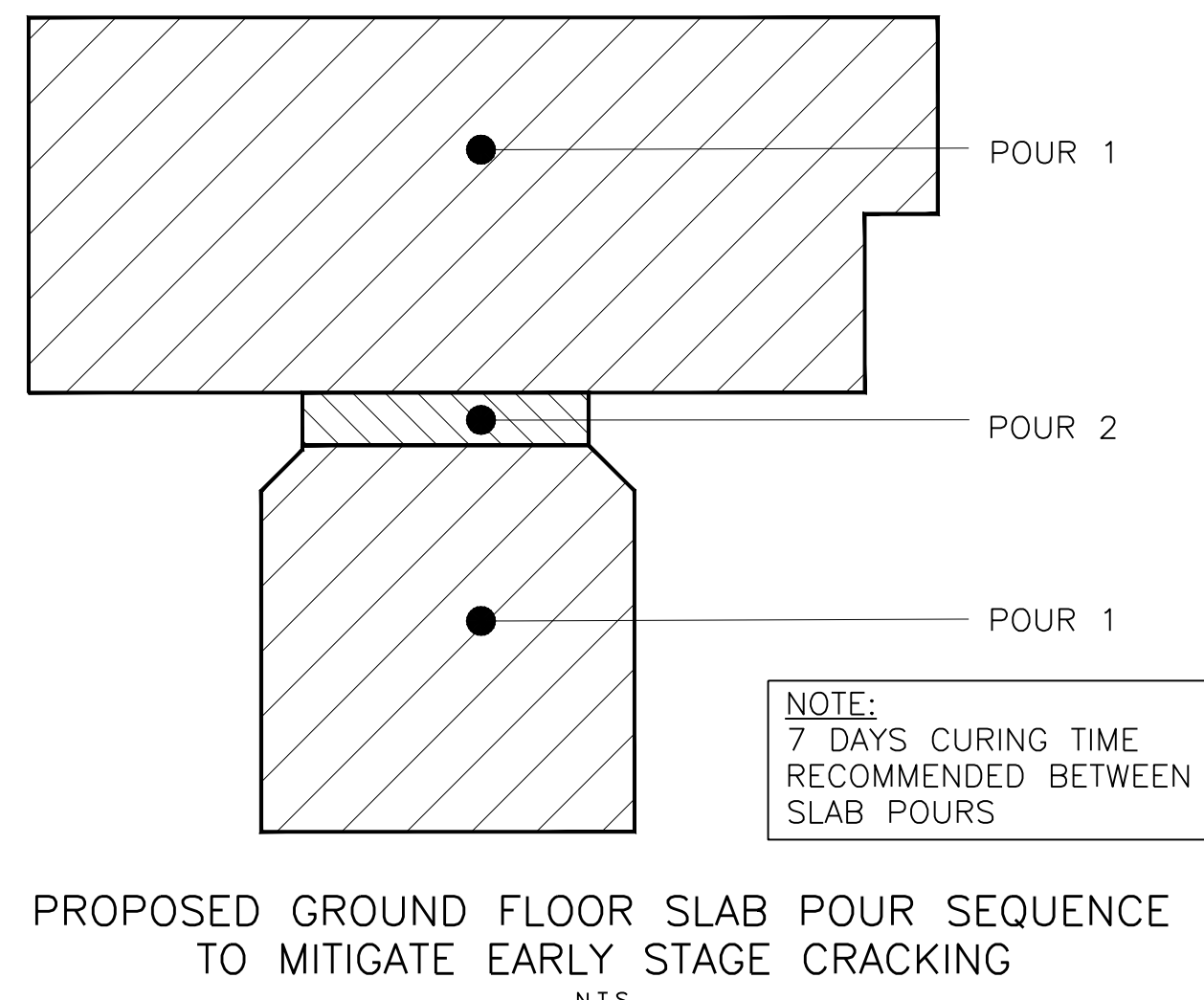
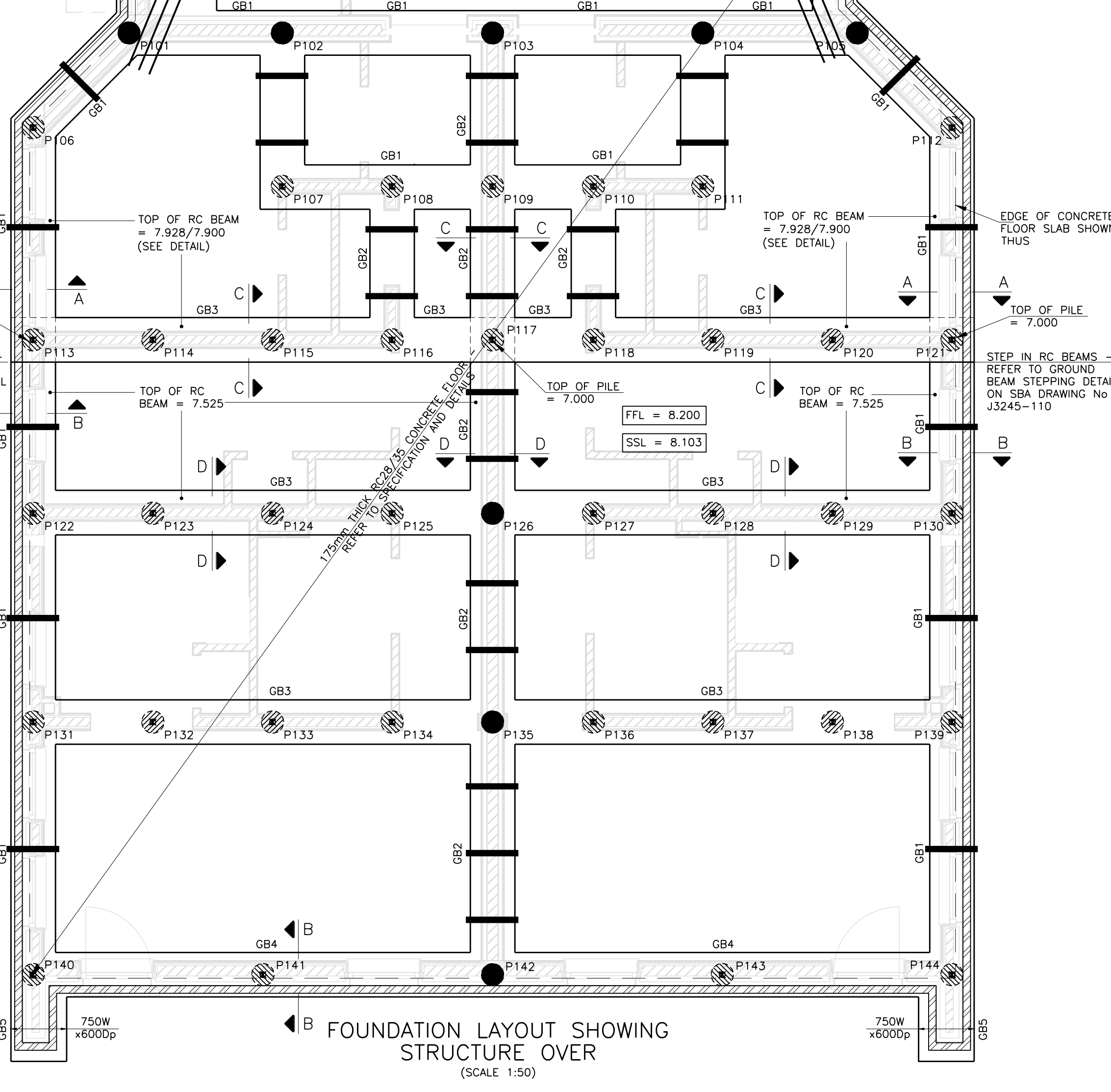


LEGEND:

- INDICATES SPAN OF 175mm THK. GRADE C28/30 CONCRETE SUSPENDED SLAB REINFORCED WITH 1 LAYER A333 MESH TO TOP & BOTTOM FACES (25mm COVER). SLAB AND RC GROUND BEAMS TO FORM MONOLITHIC STRUCTURE.
- INDICATES LOCATION OF PILE FOUNDATIONS TO CONTRACTOR'S DESIGN. (MAX 3000 UNFACTORED PILE LOAD)
- INDICATES LOCATION OF PILE FOUNDATIONS TO CONTRACTOR'S DESIGN. (MAX 5000 UNFACTORED PILE LOAD)
- Indicates pile reference - REFER TO PILING SETTING OUT.
- INDICATES Ø75mm DUCT THROUGH GROUND BEAM CENTERED ON 200mm DEEP GRANULAR BLANKET. REFER TO DETAIL ON S&A DRAWING No J3245-110 FOR PERMITTED ZONE FOR INSTALLATION.
- ALL GROUND BEAMS 600 W.U.D. IN FND3 CONCRETE. GROUND BEAM DEPTH VARIES - REFER TO S&A DRAWING J3245-110 FOR DETAILS.
- REFER TO DRAWING No. J3245-110 FOR FOUNDATION DETAILS.
- REFER TO DRAWING No. J3245-900 FOR PERFORMANCE SPECIFICATION & DETAILED CONSTRUCTION NOTES.

LIFT PIT SETTING OUT POINTS

REF. POINT	EASTING	NORTHING
LPSOP-01	251216.504	668632.201
LPSOP-02	251217.621	668631.125
LPSOP-03	251216.495	668629.747
LPSOP-04	251215.176	668630.822



REFERENCE	EASTING	NORTHING	TOP OF PILE
P001	251213.192	668648.242	7.375
P002	251215.890	668646.039	7.375
P003	251216.981	668644.245	7.375
P004	251220.772	668642.051	7.375
P005	251222.648	668640.519	7.375
P006	251223.123	668641.100	7.375
P007	251225.667	668638.548	7.375
P008	251225.772	668637.968	7.375
P009	251227.636	668636.445	7.375
P010	251229.596	668634.845	7.375
P011	251232.533	668632.454	7.375
P012	251234.829	668630.570	7.375
P013	251237.135	668628.687	7.375
P014	251235.595	668626.801	7.375
P015	251234.439	668627.745	7.375
P016	251233.289	668628.684	7.375
P017	251232.129	668629.632	7.375
P018	251230.983	668630.568	7.375
P019	251228.611	668631.639	7.375
P020	251226.981	668628.359	7.375
P021	251224.782	668636.755	7.375
P022	251221.658	668639.307	7.375
P023	251219.788	668640.845	7.375
P024	251217.097	668641.837	7.375
P025	251214.905	668644.833	7.375
P026	251211.222	668645.831	7.375
P027	251213.920	668643.627	7.375
P028	251216.136	668641.837	7.375
P029	251218.803	668639.639	7.375
P030	251220.670	668638.096	7.375
P031	251223.794	668635.545	7.375
P032	251225.667	668633.548	7.375
P033	251227.626	668632.433	7.375
P034	251221.935	668642.422	7.375
P035	251215.127	668640.632	7.375
P036	251212.816	668638.434	7.375
P037	251219.684	668636.890	7.375
P038	251222.808	668634.339	7.375
P039	251224.682	668632.828	7.375
P040	251226.641	668631.228	7.375
P041	251229.784	668629.099	7.375
P042	251209.247	668641.412	7.375
P043	251211.951	668641.216	7.375
P044	251214.136	668639.418	7.375
P045	251215.947	668637.952	7.375
P046	251216.833	668637.228	7.375
P047	251218.709	668635.696	7.375
P048	251221.833	668633.145	7.375
P049	251223.697	668631.622	7.375
P050	251224.583	668630.899	7.375
P051	251225.157	668629.816	7.375
P052	251226.399	668629.398	7.375
P053	251228.584	668627.631	7.375
P054	251211.246	668629.457	7.375
P055	251213.157	668628.186	7.375
P056	251210.963	668640.007	7.375
P057	251213.155	668638.216	7.375
P058	251214.960	668636.742	7.375
P059	251215.905	668636.028	7.375
P060	251217.950	668634.521	7.375
P061	251220.874	668631.970	7.375
P062	251222.786	668629.472	7.375
P063	251223.595	668629.689	7.375
P064	251225.572	668628.385	7.375
P065	251227.749	668626.607	7.375
P066	251227.277	668641.001	7.375
P067	251209.975	668638.797	7.375
P068	251212.167	668637.007	7.375
P069	251214.012	668635.583	7.375
P070	251214.946	668634.853	7.375
P071	251216.791	668633.347	7.375
P072	251218.435	668631.001	7.375
P073	251219.709	668628.795	7.375
P074	251221.747	668629.259	7.375
P075	251222.647	668628.528	7.375
P076	251224.534	668627.115	7.375
P077	251226.711	668625.332	7.375
P078	251229.274	668623.043	7.375
P079	251208.987	668637.588	7.375
P080	251211.179	668635.798	7.375
P081	251213.950	668624.846	6.715
P082	251216.279	668632.446	6.715
P083	251217.867	668631.149	6.715
P084	251218.919	668629.574	6.715
P085	251220.751	668628.079	6.715
P086	251223.496	668625.844	6.715
P087	251225.673	668624.066	6.715
P088	251226.303	668623.582	6.715
P089	251208.000	668636.378	7.375
P090	251210.191	668634.588	7.375
P091	251211.996	668633.114	7.375
P092	251212.954	668629.415	7.375
P093	251214.931	668630.796	6.715
P094	251216.514	668629.503	6.715
P095	251217.923	668628.257	6.715
P096	251219.756	668626.860	6.715
P097	251220.640	668626.071	6.715
P098	251222.465	668624.580	6.715
P099	251224.641	668623.029	6.715
P100	251227.303	668620.629	7.375
P101	251210.973	668630.772	7.375
P102	251212.975	668629.463	7.375
P103	251214.732	668627.169	7.375
P104	251216.968	668625.875	7.375
P105	251218.582	668624.557	7.375
P106	251219.165	668623.600	7.375
P107	251211.366	668621.860	7.375
P108	251212.413	668626.924	7.375
P109	251213.462	668626.066	7.375
P110	251214.516	668625.206	7.375
P111	251215.659	668624.272	7.375
P112	251218.763	668622.761	7.375
P113	251207.354	668626.383	7.375
P114	251208.604	668627.362	7.375
P115	251209.854	668626.341	7.375
P116	251211.104	668625.320	7.375
P117	251212.153	668624.463	7.000
P118	251213.007	668623.400	7.375
P119	251214.455	668622.583	7.375
P120	251215.704	668621.563	7.375
P121	251216.952	668620.544	7.000
P122	251205.874	668626.571	7.000
P123	251207.124	668625.550	7.000
P124	251208.374	668624.529	7.000
P125	251209.624	668623.508	7.000
P126	251210.673	668622.651	7.000
P127	251211.722	668621.791	7.000
P128	251212.976	668620.771	7.000
P129	251214.224	668619.751	7.000
P130	251215.472	668618.732	7.000
P131	251204.093	668624.390	7.000
P132	251205.343	668623.370	7.000
P133	251206.593	668622.349	7.000
P134	251207.843	668621.328	7.000
P135	251208.892	668620.471	7.000
P136	251209.946	668619.613	7.000
P137	251211.195	668618.590	7.000
P138	251212.443	668617.571	7.000
P139	251213.692	668616.551	7.000
P140	251201.938	668621.751	7.000
P141	251204.337	668619.791	7.000
P142	251206.737	668617.831	7.000
P143	251209.136	668615.872	7.000
P144	251211.536	668613.912	7.000

NOTES

- THIS DRAWING IS COPYRIGHT, RESERVED AND REMAINS THE PROPERTY OF SCOTT BENNETT ASSOCIATES.
- THE CONTRACTOR AND HIS SUBCONTRACTORS / SUPPLIERS ARE TO VERIFY ALL DIMENSIONS AND LEVELS ON SITE BEFORE MAKING SHOP DRAWINGS OR COMMENCING MANUFACTURE.
- DO NOT SCALE THIS DRAWING. ONLY USE FIGURED DIMENSIONS. THE CONTRACTOR IS TO BRING TO THE NOTICE OF THE ENGINEER ANY DISCREPANCIES CONTAINED IN THIS DRAWING PRIOR TO WORK COMMENCING. WHERE REQUIRED THIS DRAWING TO BE READ IN CONJUNCTION WITH ALL RELEVANT DESIGN DRAWINGS & SPECIFICATIONS.
- ALL WORK TO CONFORM TO THE RELEVANT BRITISH STANDARDS.
- THIS DRAWING MUST BE READ IN CONJUNCTION WITH SCOTT BENNETT ASSOCIATES HAZARD & RISK ASSESSMENT DOCUMENT. THE CONTRACTOR SHOULD ENSURE THE H & R DOCUMENT IS AVAILABLE ON SITE FOR USE BY ALL SITE PERSONNEL.

REV	DESCRIPTION	BY	CHKD	DATE
F	LIFT PIT SETTING OUT POINTS ADDED. ALL CHANGES CLOUDED.	AP	KG	19.12.16
E	LAYOUT UPDATED TO SUIT INTEGRATED SLAB AND RC BEAMS CONSTRUCTION. PILING SETTING OUT INFORMATION ADDED. ALL CHANGES CLOUDED.	AP	GM	11.11.16
D	LAYOUT AND DETAILS UPDATED TO ACCOMMODATE 10mm TOLERANCE TO PERIMETER AND 20mm TO LIFT CLT PANELS AS PER CLT MANUFACTURER. ALL CHANGES CLOUDED.	AP	GM	05.09.16
C	UPDATED TO ARCHITECTS LATEST LAYOUT.	NF	GM	19.08.16
B	LAYOUT/DETAILS UPDATED/ADDED TO SUIT CHANGE IN HOLDING DOWN DETAIL. FLOOR SLAB INCREASED TO 175mm THICK TO FLATS. LIFT PIT DETAIL REVISED.	KK	KG	29.01.16
A	GAS BARRIER/VENTING ADDED TO SITE INVESTIGATION REPORT.	KK	KG	09.11.15

ISSUED: We hereby certify this is a true and fair copy of the plan/drawing referred to in the Application.
 Detd: _____ Sd: _____

client
CCG (Scotland) Ltd

project
Yoker Ferry Road, Glasgow

title
Foundation Layout & Substructure Details

Scott Bennett Associates
 consulting civil and structural engineers

Scott Bennett Associates (Group 1) Ltd.
 19 South Gyle Drive, Gairloch Gardens, Dunfermline, KY11 8PD
 T: 01383 627537, F: 01383 627538, E: Enquiries@sbassoc.co.uk

issue status
Construction

drawn	checked	date
KK	KG	10/09/15
scales	1:50	sheet size A0
Drawing Number	J3245D-100	
	Revision	F

THIS DRAWING MUST BE READ IN CONJUNCTION WITH SCOTT BENNETT ASSOCIATES HAZARD & RISK ASSESSMENT DOCUMENT. THE CONTRACTOR SHOULD ENSURE THE H & R DOCUMENT IS AVAILABLE ON SITE FOR USE BY ALL SITE PERSONNEL.