

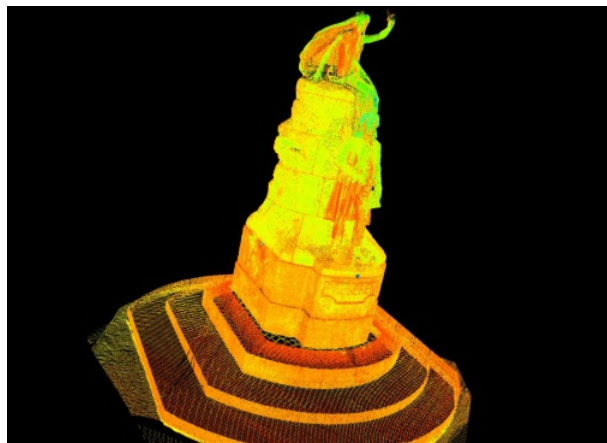


# THEORY AND APPLICATION OF LASER SCANNING

## *PROCEEDINGS*

*July 1-7, 2007, Ljubljana, SLOVENIA*

Edited by  
Mojca KOSMATIN FRAS, Anka LISEC



Ljubljana, 2007

## **Theory and Application of Lasers Scanning, Proceedings**

*All papers were reviewed by an international board of reviewers.*

### Editors:

Mojca KOSMATIN FRAS, University of Ljubljana, Ljubljana, Slovenia

Anka LISEC, University of Ljubljana, Ljubljana, Slovenia

### Program board (in the alphabetical order):

Dervim AKCA, Federal Institute of Technology (ETH), Zürich, Switzerland

Emmanuel BALTSAVIAS, Federal Institute of Technology (ETH), Zürich, Switzerland

Mojca KOSMATIN FRAS, University of Ljubljana, Ljubljana, Slovenia

Anka LISEC, University of Ljubljana, Ljubljana, Slovenia

Norbert PFEIFER, Vienna University of Technology, Vienna, Austria

Christoph STRAUB, Albert-Ludwigs University Freiburg, Germany

George VOSSSELMAN, International Institute for Geo-information and Earth Observation (ITC)

First Published in Slovenia in 2007 by

Faculty of Civil and Geodetic Engineering Jamova 2, SI -1000 Ljubljana, Slovenia ([www.fgg.uni-lj.si](http://www.fgg.uni-lj.si))

*and*

ISPRS - International Society for Photogrammetry and Remote Sensing, WG VI/5 and SC, ([www.isprs.org](http://www.isprs.org))

CIP - Kataložni zapis o publikaciji

Narodna in univerzitetna knjižnica, Ljubljana

528.7(063)

THEORY and application of laser scanning [Elektronski vir] : proceedings, July 1-7, 2007, Ljubljana, Slovenia / edited by Mojca Kosmatin Fras, Anka Liseč. - Ljubljana : Faculty of Civil and geodetic Engineering, 2007

Način dostopa (URL): <http://www.commission6.isprs.org/wg5/>

ISBN 978-961-6167-83-3

1. Kosmatin Fras, Mojca

236418304

© Faculty of Civil and Geodetic Engineering, University of Ljubljana; ISPRS WG VI/5 and SC;

Ljubljana, November 2007

# CONTENTS

## 1 PROCEEDINGS – selected papers

- 1.1 **ICL: Iterative Closest Line – a Novel Point Cloud Registration Algorithm Based on Linear Features** (*Alshawa, M.*)
- 1.2 **Analysis of Airborne Laser Scanning Data and Products in the Neusiedler See Project** (*Bitenc, M.*)
- 1.3 **Moving Polynomial in Filtering of Airborne Laser Scanning Data** (*Józków, G.*)
- 1.4 **An Undergraduate Project with Terrestrial Laser Scanner for Purpose of Architectural Survey** (*Kivilcim, C.Ö.*)
- 1.5 **Challenges in Advanced GI Education – Stimulation to Scientific and Research Work: Theory and Application** (*Lisec, A.*)
- 1.6 **Estimation of Growth Rates at Kiedler Forest Using Airborne Laser Scanning** (*Woodget, A.S.*)

## 2 INVITED LECTURES

- 2.1 **Point Cloud Co-registration** (*Akca, D.*)
- 2.2 **TLS Practical Exercise** (*Bilban, G.*)
- 2.3 **Requirements for Generating a Geometrically Correct Point Cloud** (*Friess, P.*)
- 2.4 **Airborne Laser Scanning Data Processing Tutorial**(*Lemaire, C.*)
- 2.5 **DSM/STM Filtering** (*Pfeifer, N.*)
- 2.6 **Overview of Terrestrial Laser Scanning Systems, Overall Processing and Applications** (*Pfeifer, N.*)
- 2.7 **Airborne Lidar Sensing – Applications & Operation with Latest Generation of Scanners** (*Rohrbach, A.*)
- 2.8 **Applications of Laser Scanning in Forestry** (*Straub, C.*)
- 2.9 **Practical Aspects of Terrestrial Laser Scanning** (*Studnicka, N.*)
- 2.10 **Information Extraction from Airborne Laser Scanning Data** (*Vosselman, G.*)